



SST

SysML v2 and SoA

Already ready, trivial or challenging?

Øystein Haugen

HIOF

2019-12-12

Supply Chain Networks (SCN)

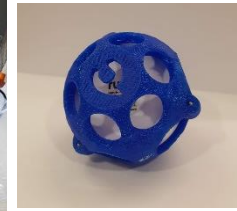
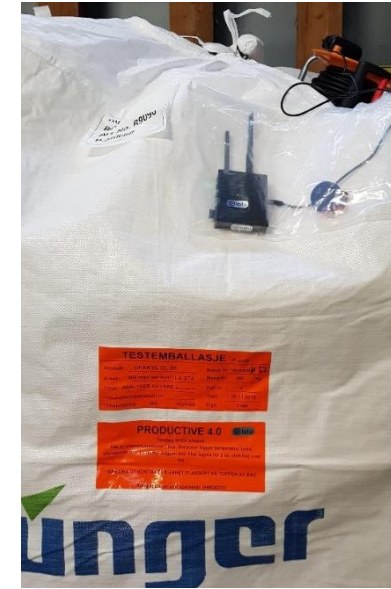
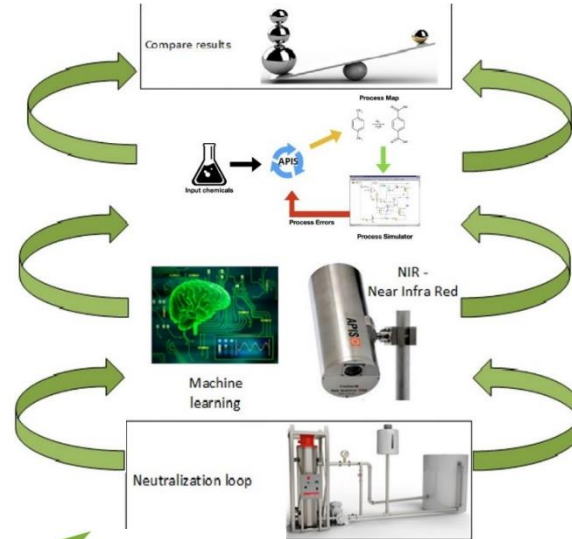
Digital Production (DP)

Product Life Cycle Management (PLM)

Improving supply logistics

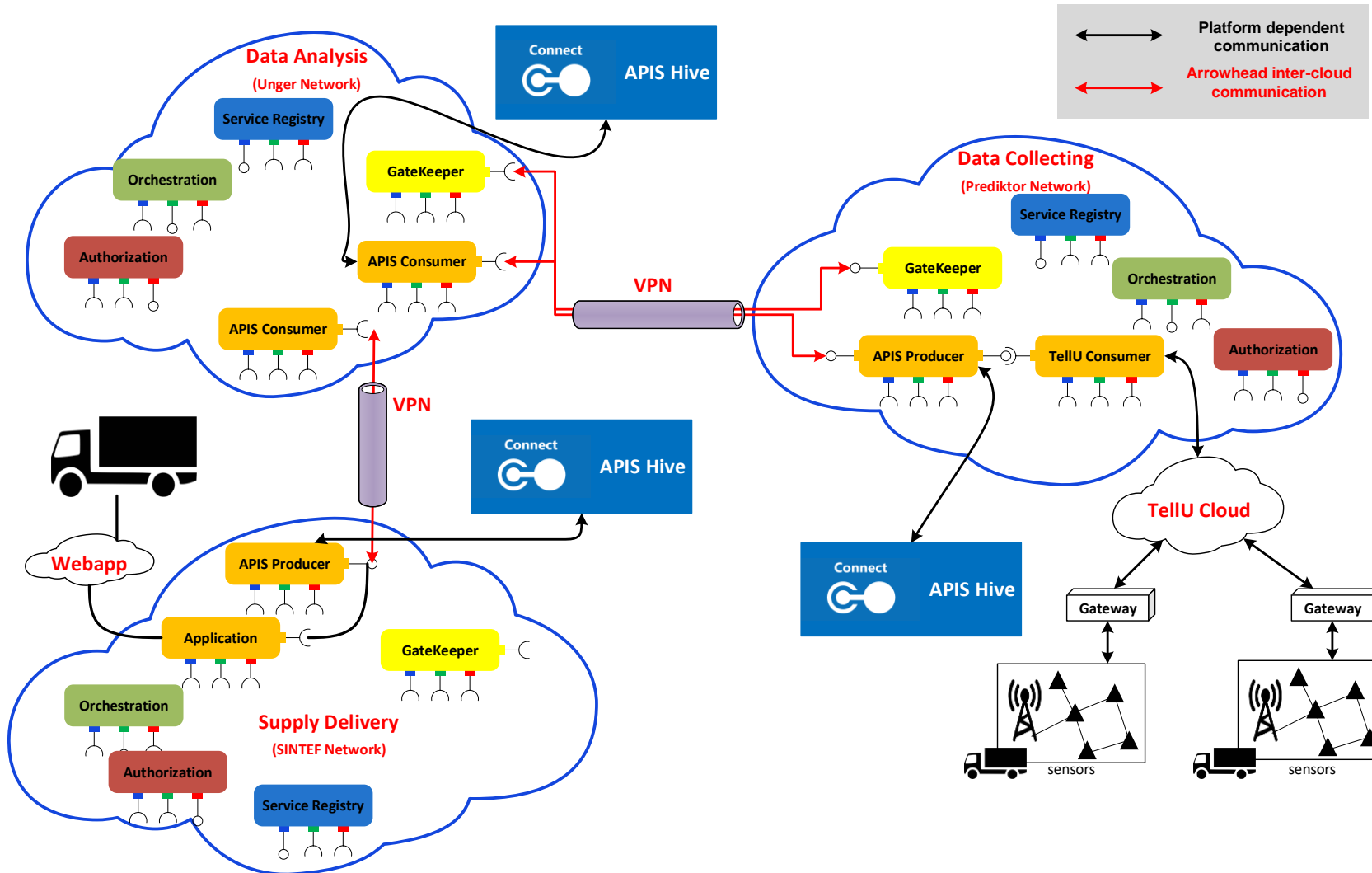
More efficient production

Monitored delivery



Integrated by Arrowhead Framework

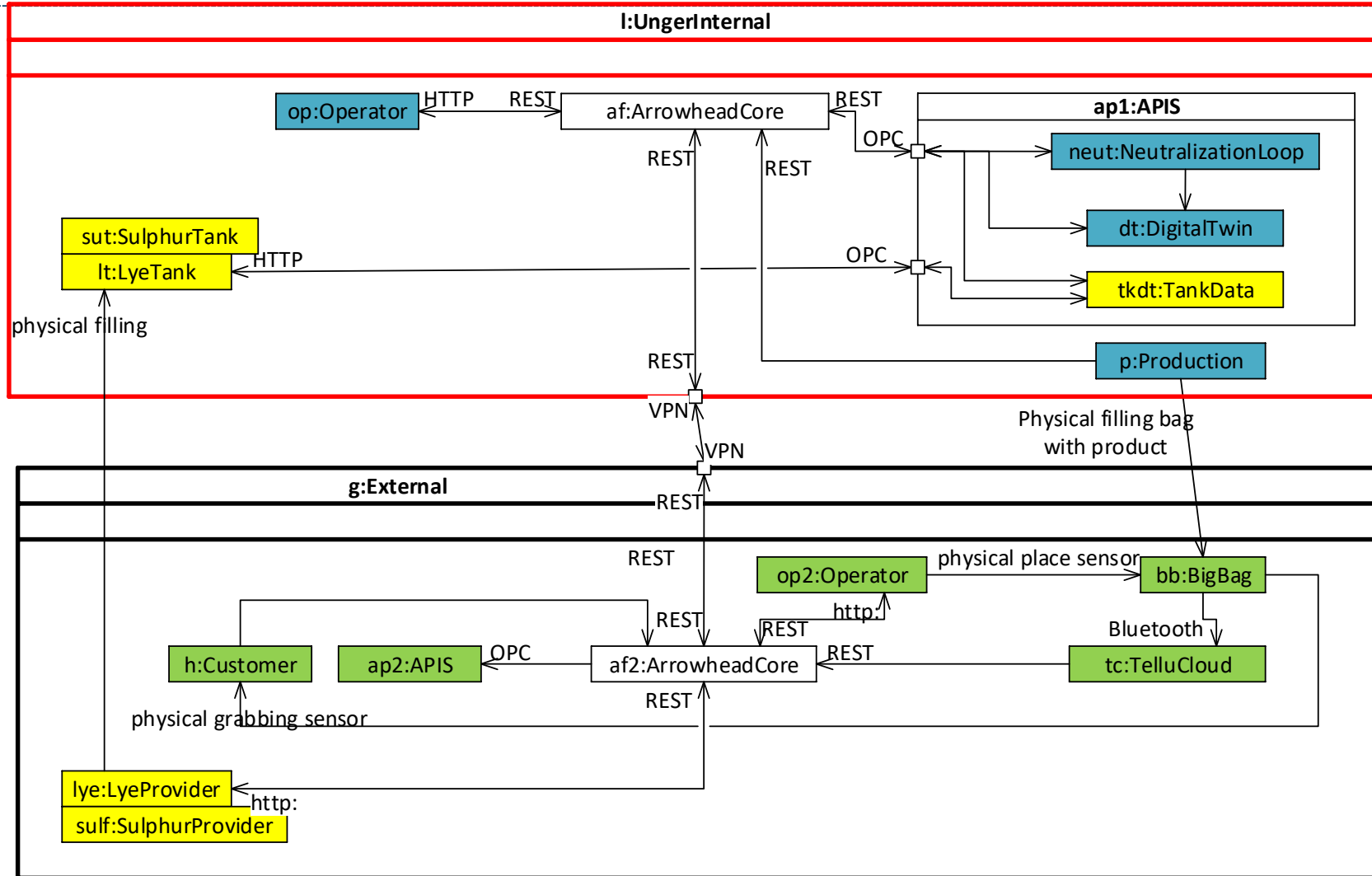




Productive 4.0

A corresponding UML composite structure

Legend:
 Blue: Production
 Yellow: Supplies
 Green: Delivery

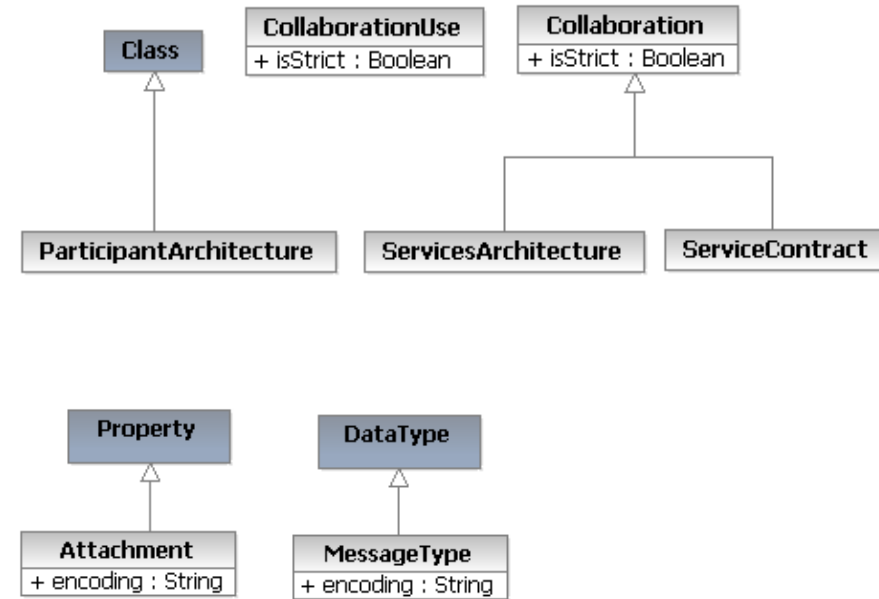
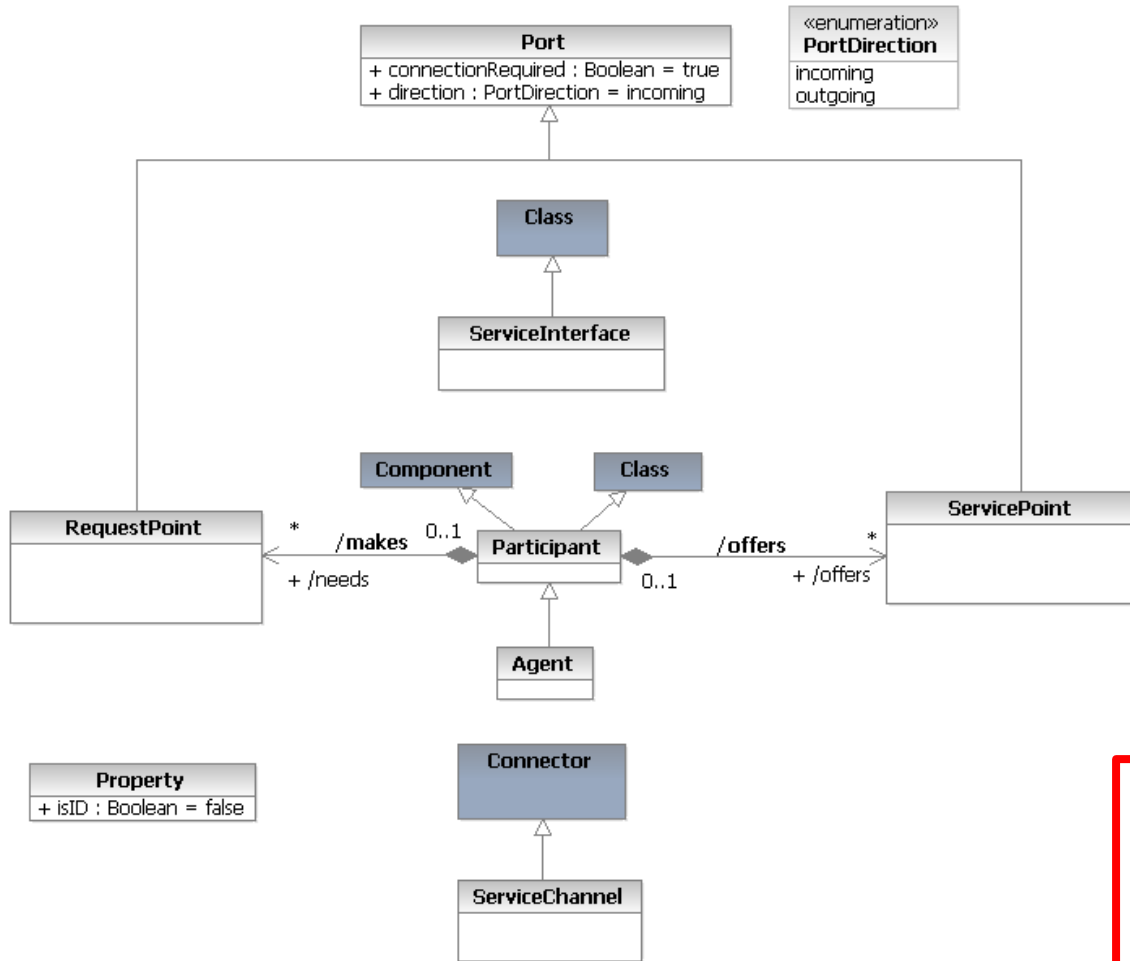




A Corresponding UML profile by IncQuery (SST member)

SST

- There is a rudimentary UML profile for Arrowhead Framework
- This profile will be discussed, improved and enhanced in the coming months
- The profile is used to generate Arrowhead Framework definitions, and conversely AHF definitions can be visualized as AHF Profile diagrams.



A service is an offer of value to another through a well-defined interface and available to a community (which may be the general public). A service results in work provided to one by another.



What is a Service?

SST

- Simple service: Fetch me a cup of tea; Thank you!
- Lasting service: Call forwarding (or page forwarding)
 - Starts by: *21*91390914*66605004# (or something similar)
 - Stops by: #21*91390914# (or something similar)
 - In between: every time 91390914 is called it is diverted to 66605004
- Continuous service: Water supply. Internet. Electricity.
- Services involving more than 2 parties: Dinner as a service needs the chef, the waiter, the cleaner, plus finally the customer(s)
- Service definition (a type) and Service usage (the application)